

XP Fit Plus SC 900 μ m Field Assembly Connector Instruction Manual

For your safety operation

This product has been designed and manufactured to assure personal safety. Improper use can result in bodily injury and serious damage to the product. Please read and observe all warnings and instructions given in this operation manual.

- ★ **Wear safety glasses** before handling optical fiber to protect the eyes. Small pieces of glass fibers are sharp and can cause damage if they get in the eyes or puncture skin if handled wrong.
- ★ **Never look into** the end of a connector or an optical fiber which may have a laser coupled to it. Laser light might damage your eyes. Please note that laser light is not visible.
- ★ When working off of the ground, please be careful not to drop an assembling tool.

(Please use a wrist strap etc.)

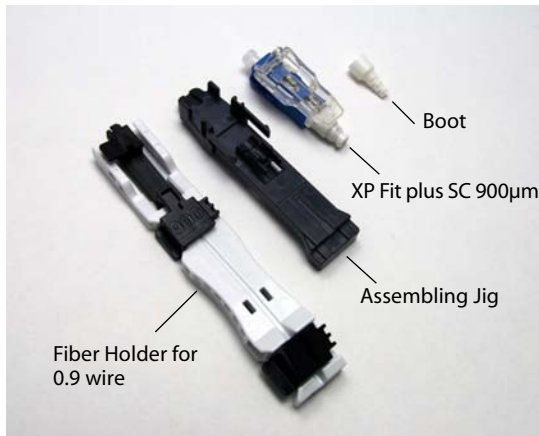


Precautions

1. Improper assembly will result in a loss of performance. **Please read instructions** given in this operation manual.
2. The product is sensitive to dirt and dust.
3. The performance will be influenced by the fiber cutting surface condition. Use a cutter with a sharp blade for the best results.
4. Please **insert the fiber into the connector slowly**. If the fiber is roughly inserted, it might be damaged or broken, leading to failure of connector installation. Broken fiber could scatter in all directions.
5. Do not remove the dust cap **until the connector has been completely assembled** in order not to cause a high insertion loss.
6. A proper amount of index matching gel is applied in the connector. Do not **insert fiber more than once** into connector.

Composition

Connector (with wedge): 10pcs
Boot: 10pcs
Fiber holder for 0.9 wire: 1pc
Assembling Jig: 1pc



Following tools shall be required adding above parts,

1. Fiber Cleaver
2. Jacket Remover

Assembling tools example

Fiber cleaver



Jacket remover



SENKO ADVANCED COMPONENTS, INC.

Americas

USA EAST 1-888-32-SENKO
USA WEST 1-858-623-3300
Sales-Americas@senko.com

Asia

HONG KONG +852-2121-0516
SHANGHAI +86-21-5830-4513
SHENZHEN +86-755-2533-4893
WUHAN +86-27-8725-9057
Sales-Asia@senko.com

Europe

UK +44 (0) 118 982 1600
ITALY +39 011 839 9828
POLAND +48 71 79 88 152
Sales-Europe@senko.com

Asia Pacific

AUSTRALIA +61 (0) 3 9755-7922
Sales-Asia-Pacific@senko.com

Middle East North Africa

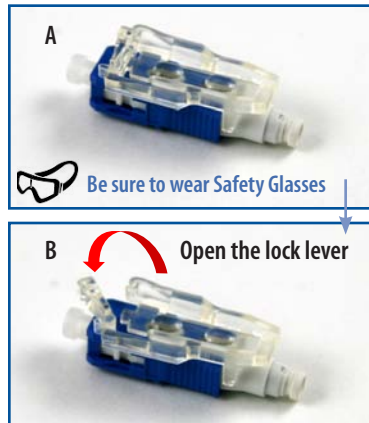
P.O. Box # 262381, Jebel Ali, Dubai, U.A.E.
Sales-MENA@senko.com

WWW.SENKO.COM

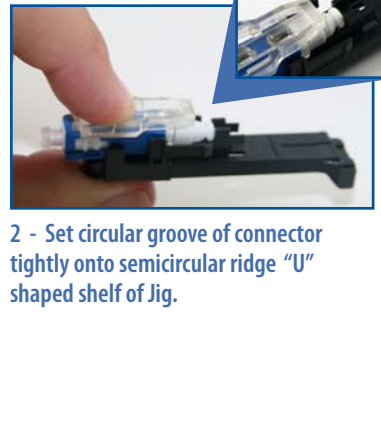
Japan

TOKYO +81 (0) 3 3262-0211
Sales-Japan@senko.com

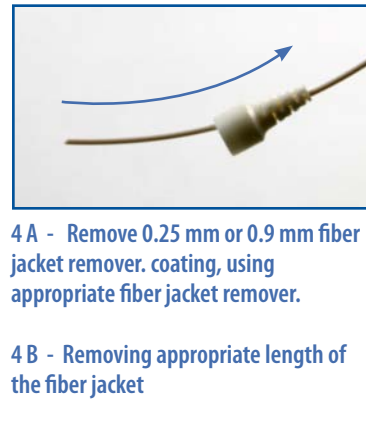
1 - Preparing Connector



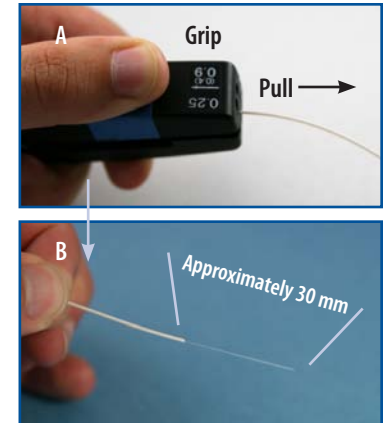
2 - Setting Connector



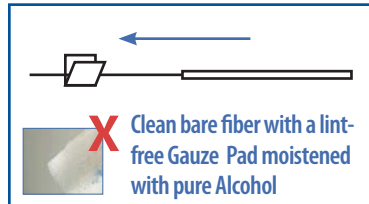
3 - Install boot onto fiber as shown



4 - Removing 0.9 Wire Coating



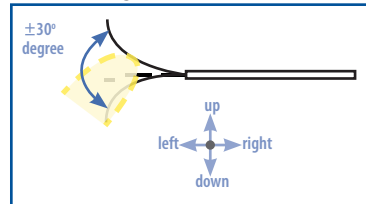
5 - Cleaning Bare Fiber



5 - DO NOT USE DIRTY GAUZE!

6 - Bend fiber several times by moving it with your finger back and fourth. IF FIBER BREAKS, START WITH A NEW FIBER FROM THE BEGINNING.

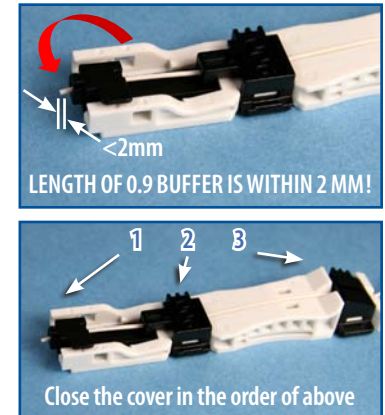
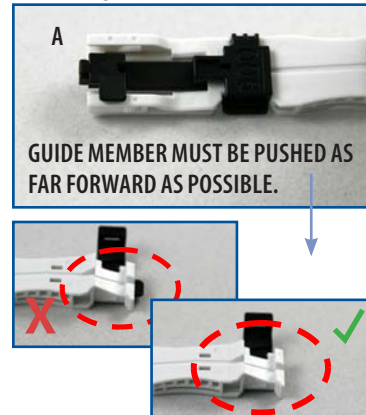
6 - Screening Fiber



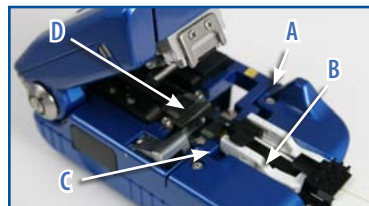
7B - When fully pushed forward guide member should not be visible from the back end of the fiber holder

7D - SET THE FIBER ALONG THE GROOVE TIGHTLY BEFORE CLOSING THE BACK

7 - Setting Fiber on the Fiber Holder



8 - The Fiber Cleaver



8 - A - Insert slider
B - Set the fiber holder to the Cleaver
C - Set the fiber holder tightly
D - Push the cover of the Cleaver

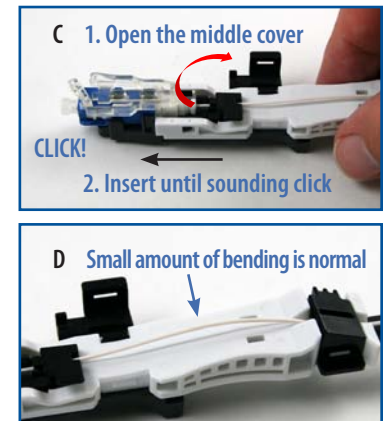
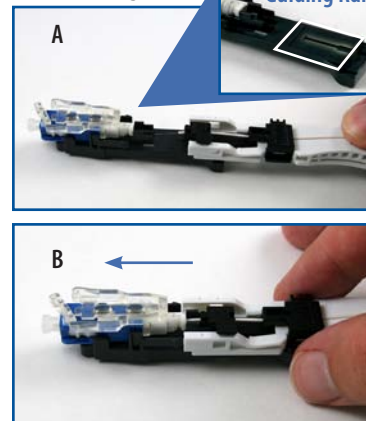
SET THE FIBER HOLDER TIGHTLY!

9 - Checking Cut Dimension

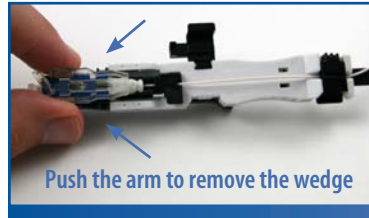


10A - Set the fiber holder to the guiding rail
10B - Slide holder slowly until it is stopped. BE CAREFUL NOT TO HIT THE EDGE OF FIBER!
10C - See diagram
10D - CHECKING WHETHER THE FIBER IS BENDING OR NOT (IMPORTANT)!

10 - Inserting Fiber



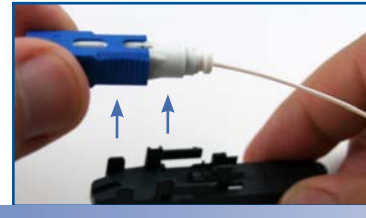
11 - Remove the Wedge



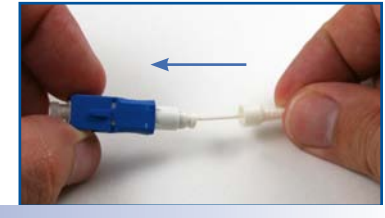
12 - Open the Front and Back Cover



13 - Take out Connector



14 - Fitting Boot



15 - Completion

