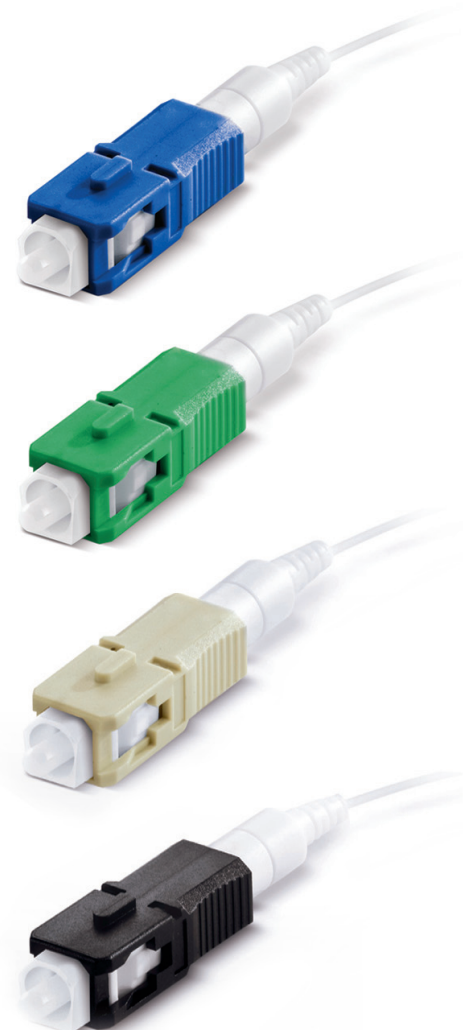


XP FIT PLUS SC CONNECTOR

Field Installable

The XP Fit Plus is a pre-polished, pre-assembled connector compatible with the standard SC connector. In place of epoxy, an internal mechanical grip gently but effectively holds the fiber in place and can be installed in under two minutes. Without polishing or adhesives,

the XP Fit Plus makes field installations quick and easy, eliminating the need for epoxy curing and hand polishing at the work site. The XP Fit Plus comes with an assembling jig and fiber holder, making for an accurate alignment and fiber cleave when terminating the connector.



SPECIFICATION	SINGLEMODE	MULTIMODE
For XP Fit Plus SC	Typical	
Insertion Loss	0.2dB (PC) and 0.3dB (APC)	0.1dB
Return Loss	55dB (PC) 60dB (APC)	35dB
Durability	<0.1 dB change, 500 matings	
Operating Temperature	-40°C to +75°C	
Tensile	TIA/EIA 568-B.3	
Intermateability	IEC 61754-4	

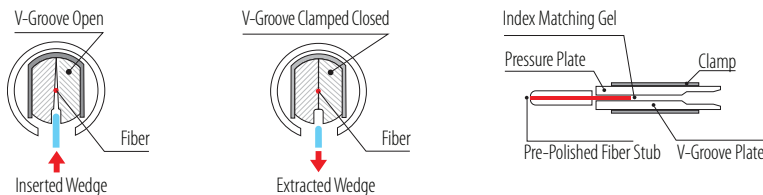
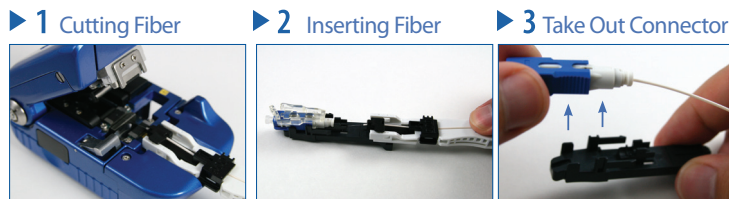
Note: Specifications shown above were obtained using SENKO recommended products and procedures.

PART NUMBER	DESCRIPTION	HOUSING	BOOT COLOR
318-191-627	XPFit Plus SC Connector SM: PC 900µm/250µm	Blue	White
318-091-427	XPFit Plus SC Connector SC: APC 900µm/250µm	Green	White
318-291-727	XPFit Plus SC Connector MM: 50/125 900µm/250µm	Black	White
318-391-927	XPFit Plus SC Connector MM :62.5/125 900µm/250µm	Beige	White
318-491-527	XPFit Plus SC Connector MM: 50/125 10G OM3900µm/250µm	Aqua	White

318-191-627 ORDER CODE example

ASSEMBLY PROCEDURE

- NO EPOXY
- NO POLISHING



XP Fit Plus SC Field Installable Connector